

IMPROVE YOUR BROADBAND!

If you are interested in improving your broadband speed, please read the article on the back page of this edition of the *Acorn*. If enough people are interested, the Parish Council has identified a way of getting high speed broadband connections to homes in the parish.

The Acorn is taking a break

This is the last edition of the *Acorn* for 2019. In keeping with previous years, your editors will be taking December off, so the next edition should be with you by early February 2020.

2020 already! It seems that 2019 has bustled past with unseemly haste, and that there's always more to do than time to do it in. Nonetheless, people seem to find time to send us items to fill each edition of the *Acorn*, and our wonderful network of people who distribute the *Acorn* around the parish in all weathers continue to provide great service. Thank you all!

Wishing you a splendid Christmas and New Year,
Julia and Peter

Thank you to our Mottisfont neighbours and good Samaritans

Thank you to all those who stopped to help me and to call for an ambulance following my undignified fall near the gates of Mottisfont Abbey on Saturday 9th November. You were all kindness itself to both Peter and me and were right, despite my protestations, to insist I went to hospital. As I write I am still nursing injured ribs, a sore wrist and dented pride, but otherwise am on the mend.

When we meet again, I hope that it is not on cold wet tarmac in the pouring rain!

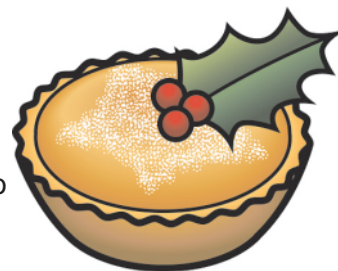
Julia Barnett

CHRISTMAS GET-TOGETHER

Mottisfont Village Hall
22nd December from 12.30

Everyone, young and not so young, is invited to the village hall to celebrate Christmas.

Please bring some food to share. We will provide tea, coffee and juice.



This will be an opportunity to meet and chat with friends and neighbours before going to the Christmas Carol Service at St. Andrew's Church at 3pm.

We hope to see you there.

A very Happy Christmas!

Village Hall Committee

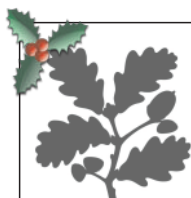
Broughton Community Shop is upsizing!

When Broughton's long-standing village store closed in August 2018 due to the retirement of its owners, the response of the village was to pull together to open a Community Shop, run solely by volunteers, in a converted shipping container – which has affectionately become known as our 'Shop in a Box'.

Small but perfectly formed, the Shop in a Box has for the last 15 months been successfully supplying essentials and treats, fresh and frozen goods, local produce and much more to the residents of Broughton and nearby villages as well as passers-by.

The exciting news is that the shop is about to move into grander premises! On Monday 2nd December, Broughton Community Shop will open in a purpose-built extension to the newly refurbished Village Hall, along with Post Office and

continued on page 7



National Trust

The leaves are still falling from the trees, but we're already starting to feel festive over here. The Winter Flower Fairies have taken up residence in beautiful little houses in the winter garden and up in the art gallery, where we have a special exhibition of original Flower Fairy illustrations by Cicely Mary Barker. The house is literally dripping with decorations, all on an enchanted garden theme. I want our amazing florists to come and do my house next!

As usual, we're open over the Christmas holidays apart from Christmas Eve and Christmas Day, so if you fancy a walk and to see some festive sparkle, do come on over. We've got a family trail too, so any kids or grandchildren can work off a bit of energy outside. Our Christmas offer runs until the 5th of January, but it's worth coming back to see the winter garden after that too as it really develops its colour and fragrance early in the new year.

If you are about on the evening of Friday 13th December, it would be lovely to see you in the orchard at Spearywell for a few carols around the nativity scene. We're very happy to be helping again with this enjoyable community event, and we'll look forward to staving off the nip in the air with some mulled wine, hot chocolate and mince pies as we sing our favourite carols together.

On the 18th of January, we'll be opening 'Comedy and Commentary: the Best of British Cartoons'. This is an exhibition designed to make us smile and chase away the January blues. These artists find fun in everything from pets to politicians, and observations of daily life that will cause a chuckle just when we may need it.

On behalf of all the staff and volunteers at Mottisfont Abbey, please may I wish everyone a very happy Christmas, and a happy and healthy new year. Here's to a very good 2020!

With all best wishes,

Louise
General Manager, Mottisfont & South West
Hampshire National Trust

Festive fun...

An Enchanted Christmas with the Flower Fairies Until Sunday 5th January, 10am-4pm (whole property closed 24 and 25 December)

Magical woodlands await this Christmas, with decorations inspired by Cicely Mary Barker's exquisite Winter Flower Fairy illustrations. The original artworks are on show in the gallery, while the house and gardens are beautifully dressed with native winter foliage and traditional festive colours. Families can explore with a fairy-themed activity trail.



In the gardens...

The winter garden is ten years old in 2020, and we're creating a new, self-led trail to help you explore it, available from 13th January. The one-acre garden glows with brilliantly coloured winter bark from dogwood and ornamental bramble, while berries, fruit and late- and early-flowering perennials such as bergenias and hellebores also provide colour during the shortest days of the year. Sweet-scented daphnes and winter-flowering honeysuckles, wintersweet and witch hazel all contribute to a subtle fragrance in the crisp cold air.

Delicate drifts of snowdrops will begin to appear beside our waterways from January.

In the gallery...

Comedy and Commentary: the Best of British Cartoons

Saturday 18th January – Sunday 19th April, 11am-4pm (5pm from February)

Witty works from some of Britain's best cartoonists commenting on current affairs, showcasing the distinguished history of contemporary British cartooning. You'll come across plenty of topical characters, including Boris Johnson and Donald Trump, in a show that explores social and political preoccupations that have gripped the nation. Humour is at its heart, with funny, beautifully drawn works from the likes of Matt of the Telegraph, Mike Williams of Private Eye, and Ronald Searle.

On the wider estate...

Look out for overwintering birds such as redwings while you walk the wider estate - fieldfares and waxwings may also be spotted later in the season. As part of ongoing woodland restoration and improvement works we'll be planting 3000 trees across the estate this winter to improve wildlife habitats. This includes large scale planting in areas previously cleared of soft woods and improving our orchard species mix with regional heritage fruit tree varieties. We'll also be carrying out other essential forestry works, including felling trees to improve light conditions along our ride networks, and thinning operations to allow the remaining trees to grow to maturity. Ongoing coppicing in Queen Meadow paves the way for displays of ground flora in spring and provides a supply of produce such as charcoal and faggots which you can buy from Mottisfont's shop. Please take note of safety signs and path closures; they are for your safety and the safety of the forest workers. We will try to keep disruption to a minimum.

Keep in touch...

Visit our website, nationaltrust.org.uk/mottisfont, to keep up to date with things to see and do. You can also find us on social media – look out for us on Facebook, Instagram and follow us on Twitter @MottisfontNT for regular updates.

THE MILL ARMS

We are part way through our third year here at the Mill Arms and looking forward to our third Christmas and New Year. 2019 has been another busy year and we are delighted that the Tytherley Skittles League – 14 teams who play on a Monday and Wednesday night - have returned for a second year. We hosted our first engagement party followed by the wedding of our good friends Emma and Graham McDougall, and already have another wedding booked for 2020, along with numerous milestone birthdays and anniversaries.



The Christmas menu is now available (but must be pre booked) and will be served Monday to Saturday from Monday 2nd December until Saturday 21st December. Friday and Saturday dates are going fast so if you are planning on dining with us can we suggest you get in touch soon.

Our Christmas Quiz will be on Thursday 19th December, and we will combine that evening with our Christmas Draw. First prize this year will again be a Pin of Beer (that's 36 pints for on site consumption), along with wine, spirits, chocolate and toys. The Draw sheets are pinned up in the bar – purchase a square for 50p, and the more squares we sell, the more prizes we buy. Please note that in order to win the Pin you must be present at the draw – all other prizes can be won without being present.

Dates and times for Christmas/New Year openings are as follows :

Thurs 19 December: Quiz (7.30pm) and Raffle (9.30pm). Teams of up to 6 people. £1 entry per person. Prize for the winning team, and mince pies all round.

Christmas Eve:	12 noon to 11pm	(food served 12-3pm regular lunch menu)
Christmas Day:	12 noon to 2pm	(bar only)
Boxing Day:	12 noon to 5pm	(food served 12-3pm special brunch menu)
New Years' Eve:	12 noon to 5pm	(food served 12-3pm regular lunch menu)
New Years' Day:	12 noon to 5pm	(food served 12-3pm special brunch menu)

We look forward to seeing you over the festive season and raising a glass or two. Gina, Lorna and the staff wish you a Merry Christmas and a healthy and prosperous 2020.

On a final note, we will be holding our staff Christmas Party on Sunday 12th January, so will be serving food 12-4pm and closing at 6pm on this date.

Lockerley Primary School Christmas Fair

Friday 6th December, 3.30 - 5.30pm

***Grand Raffle and Hamper Raffle, Tombola,
Children's Games and Crafts, Face Painting,
Produce Stall, Refreshments and
Someone Special reading a story.***

Everyone in the community is welcome to come and join us for a fun afternoon.

- o o o - o o o - o o o -

GOVERNOR VACANCY

We are currently looking for a governor to join our friendly and experienced team at Lockerley Primary School.

Governing Body meetings generally take place outside of school hours, however having the flexibility to occasionally be in school during the day would be beneficial. The Governing body aims to

meet three times a term.

The role is enjoyable, engaging, challenging and rewarding, offering you:

An opportunity to meet and work with varied individuals of different skills;

Training courses to help you develop as a governor;

A unique opportunity to take on a strategic role which will help to shape the education of young people.

If you are interested in applying for the role please call the school on 340485.

Broughton Talks

(formerly Test Valley Villages Lectures)

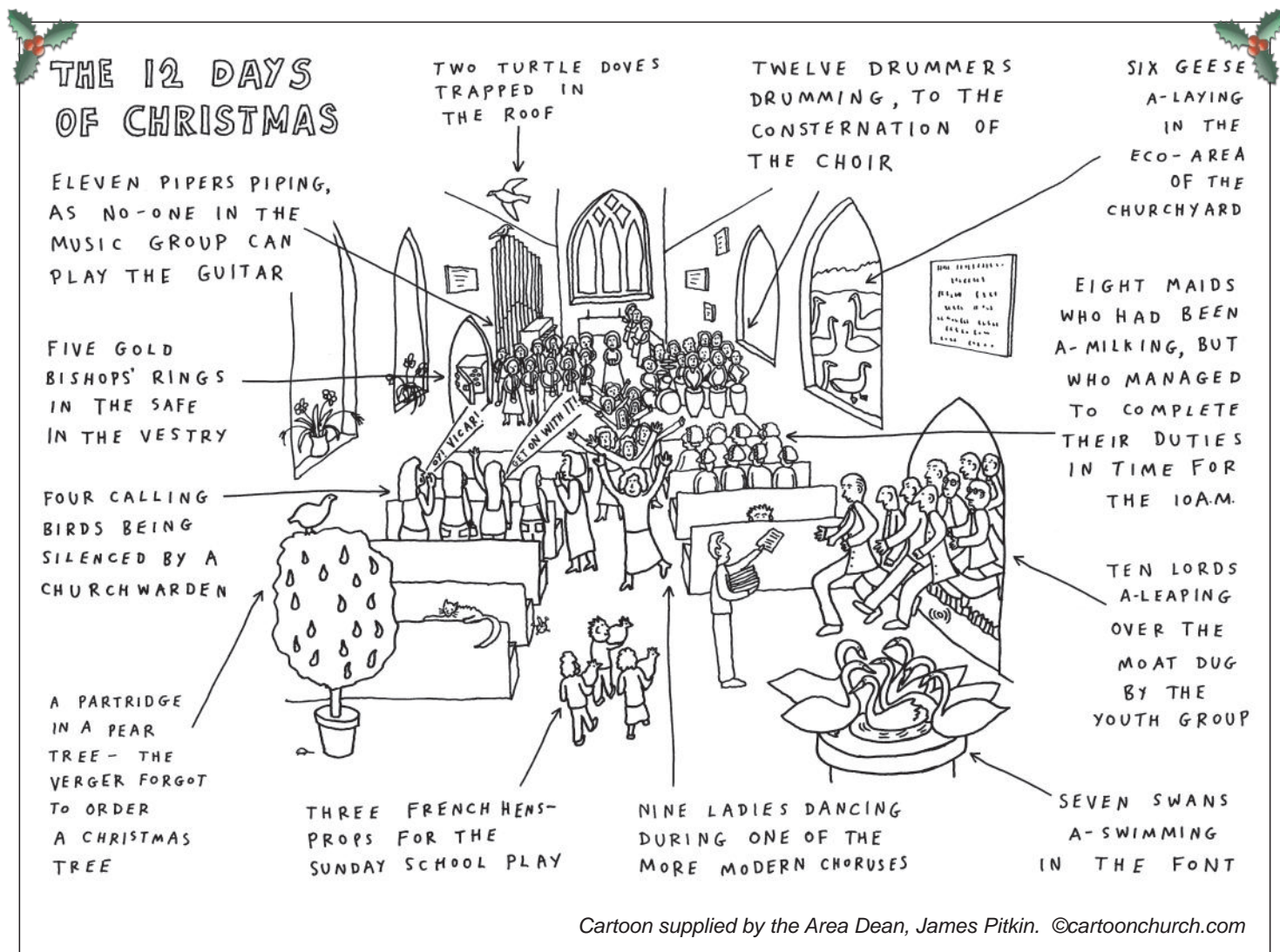
There will be no Broughton Talk in December, but save the date of 15th January, when there will be a talk about the Vulture Projects at the Hawk Conservancy. 8pm in Broughton Village Hall as usual.



SERVICES FOR DECEMBER 2019 & JANUARY 2020



Date	Time	Location	Service
1st December Advent	9.30am	Broughton	Parish Communion
	11am	Mottisfont	Advent service with procession to Mottisfont Abbey
8th December Advent 2	8am	Broughton	Holy Communion
	9.30am	Bossington	Parish Communion BCP
	9.30am	Broughton	The Bible Uncovered
	11am	Mottisfont	Messy Church
	6pm	Houghton	Evensong
15th December Advent 3	9.30am	Broughton	Parish Communion
	9.30am	Mottisfont	Parish Communion BCP
17th December	2pm	Broughton	Broughton Primary Carol Service (in St. Mary's)
19th December	6.30pm	Bossington	Carol Service
20th December	7pm	Houghton	Carol Service
22nd December Advent 4	8am	Broughton	Holy Communion BCP
	9.30am	Houghton	Parish Communion
	11am	Mottisfont	Family Communion
	3pm	Mottisfont	Carol Service
	5pm	Broughton	Carol Service, Children's Nativity Tableau & Broughton Choirs
	6pm	Bossington	Meditation
24th December	3pm	Mottisfont	Crib Service
	4.30pm	Broughton	Crib Service
	11.30pm	Broughton	Midnight Communion
25th December Christmas Day	9.30am	Bossington	Holy Communion BCP
	9.30am	Mottisfont	Family Communion
	10am	Broughton	Family Communion
	11am	Houghton	Family Communion
29th December Christmas 1	10am	Leckford	Parish Communion for the Mid-Test Benefice
5th January Epiphany	9.30am	Broughton	Parish Communion
12th January Baptism of Christ	8am	Broughton	Holy Communion
	9.30am	Bossington	Parish Communion BCP
	9.30am	Broughton	The Bible Uncovered
	11am	Mottisfont	Messy Church
	6pm	Houghton	Evensong
19th January Epiphany 3	9.30am	Broughton	Parish Communion
	9.30am	Mottisfont	Parish Communion BCP
26th January Epiphany 4	8am	Broughton	Holy Communion BCP
	9.30am	Broughton	Family Service with Baptism
	9.30am	Houghton	Parish Communion
	11am	Mottisfont	Family Communion
	6pm	Bossington	Meditation
BCP: Book of Common Prayer			



From the Rector

The coming month of December needs little introduction in the life of the Church. It is widely recognised as a time when congregations are busy, communities are singing carols, and vicars are torn between the need to enter into the spirit of the occasion while also wanting to encourage people to wait a little, and reflect upon the Advent theme of preparation instead.

Christmas, as far as the Church is concerned, is celebrated from 25th December until Candlemas on 2nd February. However it is marked throughout the month of December.

During the month there will be nativity re-enactments, carols sung around trees, Christmas stories set in barns, midnight services, crib services and carol services, all washed down by plenty of mulled wine and mince pies.

The details of Christmas church events in your village will hopefully be distributed to you on a Christmas card.

In amongst all this busyness and celebration I would encourage you to find brief moments to pause and see God's presence in your midst. We

may be familiar with the Christmas story, but often miss the notion that it is a time to remember the incarnation of God – the moment when God himself came to share in our world.

The idea that God is not remote and distant but real and present in our world sharing in the realities of our lives and knowing our joys and sorrows is a key message at this time of year.

So as you enjoy marking the season, I would encourage you to open eyes, hearts and minds enough to notice in little ways how God is present in your world, and sharing in your life.

BROUGHTON BRIGHT HOUR

Thursdays at 2.30pm in the Meeting Room at St. Mary's Church, Broughton

Events for December

5th December: Carols and Mince Pies

Everyone welcome, please come and join us.

There will not be any more meetings until February 2020.

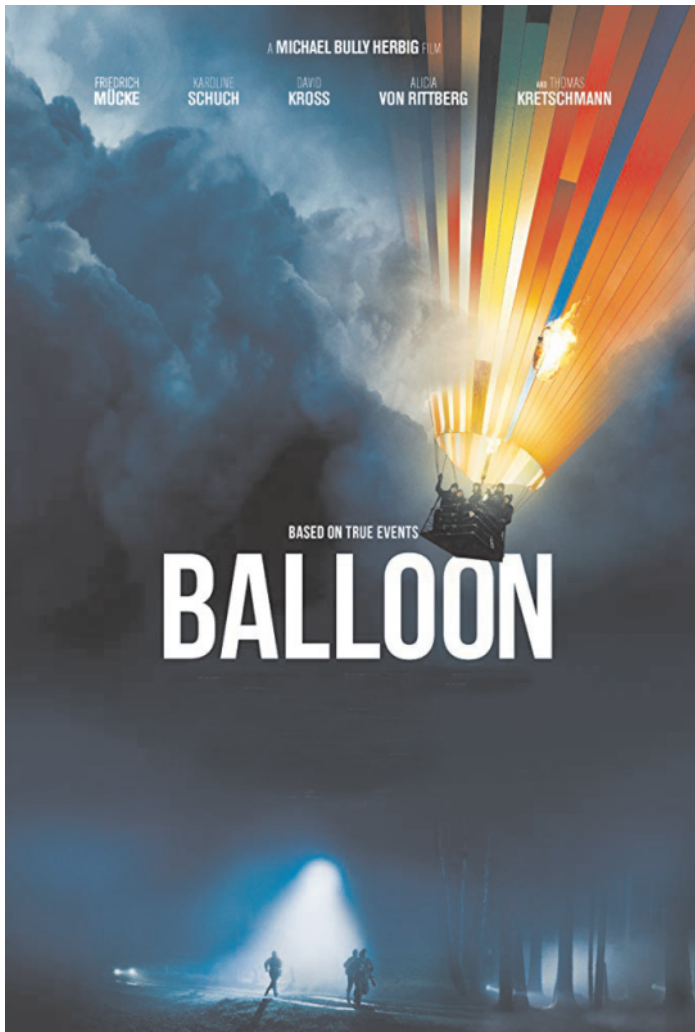
Barbara Perry, Booking Secretary, 301466

STOCKBRIDGE CINEMA

Friday 6 December: Balloon (12A)

A drama dealing with the crossing of the inner German border to West Germany by two families in the summer of 1979.

Desperate to leave East Germany, they attempt to flee in a homemade hot-air balloon. [In German with English subtitles]



Showing at Stockbridge Town Hall SO20 6HE at 7.30pm.

Wednesday 11 December: Late Night (15)

Comedy in which a legendary late-night talk show host's world is turned upside down when she hires her only female staff writer. Originally intended to smooth over diversity concerns, her decision has unexpectedly hilarious consequences as the two women, separated by culture and generation, are united by their love of a biting punchline.

Showing at Stockbridge Town Hall SO20 6HE at 4.30pm and 7.30pm.

Tickets £5 from Garden Inn and John Robinson in Stockbridge, or online via our website www.stockbridgcinema.org.uk.

MEET THE NEIGHBOURS

Come and join neighbours and friends for a chat over a drink at the Mill Arms.

Thursday, 19th December, from 7pm



Whist Drives

at Mottisfont Village Hall

The last whist drive of 2019 will be on Friday 20th December (Christmas special with mulled wine and mince pies!)



Commencing at 7pm



Wonderful prizes and refreshments as always!

Don't forget the parish web site:

www.mottisfontpc.org.uk





continued from the front page

coffee counters. The shop will stock an even wider range of goods to entice its customers, including more local produce, cards and stationery.

The new range of refillables – dry goods and liquids – will take centre stage. Just bring along your containers, fill as required and pay by weight – no plastic packaging in sight!

Post a parcel or withdraw some cash at the Post Office, and then relax over a cup of tea or coffee and a piece of cake.

Broughton Community Shop is indebted to all of its volunteers – and we always welcome more - who give their time so generously, and to everyone who supports this community project in whatever way.

We cordially invite you to come and browse. We hope we can tempt you to shop with us, use the Post Office and make it a place to meet with friends. We look forward to seeing you soon!

Opening hours: Mon-Fri 8.00am – 5.30pm; Saturday 8.30am – 12.30pm; Sunday 9.30am – 12.30pm

Broughton Community Shop (Hampshire) Limited is a Community Benefit Society, registered under the Co-operative and Community Benefits Societies Act 2014. Registration no: RS007762.

The Thomas Dowse's Charity: What do we do? Can we help?

The Thomas Dowse's Charity is able to provide grants to individuals, up to the age of 25, living in Broughton, Bossington, Mottisfont and Dunbridge, for educational purposes, including such things as the cost of school trips, music tuition, overseas educational trips, uniform, swimming lessons, transport to educational establishments, laptops, and books.

Applications are treated in strict confidence. Applicants must demonstrate need, but there is no means testing.

Applications for consideration at the next meeting should be received by the secretary at least 10 days before the next meeting (i.e. by Sunday, 16th February).

Grant applications should be made on the new application forms which have the Trust's Privacy Notice attached for your information. These are available from St. Mary's Church, Broughton, Mottisfont Church, Broughton Primary School or by email from tina-stuart-1-at-gmail-dot-com. *(remove the dashes, and change "at" to "@" and "dot" to ".")*.

Mottisfont and Dunbridge WI



At this month's meeting we welcomed 19 members and guests to a talk about RAODS.



The speaker was Matthew Ellison, who some may remember from his role as Alan Bennet in the production of 'The Lady & the Van'. Alan gave a brief history of the RAODS from their beginnings at the Crosfield Hall and their later move to The Plaza theatre. We were also shown slides of various productions over the years. It was a very entertaining, interesting evening and enjoyed by all present.

The December meeting will be a 'Christmas Celebration', and everyone will need to bring a pair of scissors or secateurs. We will be making a table decoration ready for Christmas, and there will be some festive eats. This meeting will take place on 10th December at 7.30pm in Mottisfont Village Hall. Guests will be very welcome.

At the December meeting we are also be collecting mugs filled with sweets which will be given to Romsey Young Carers for distribution.

The next meeting after this will be on 14th January at 7.30pm in Mottisfont Village Hall, when the subject will be 'Finding Fossils'. The speakers will be Janet & Roger Brown. Guests will be very welcome on this evening. Come along and meet new friends at the start of a new year.

I would like to take this opportunity to wish all readers a very Happy Christmas & New Year.

Mary Batten



Pop-up Pub 7th December Awbridge Village Hall

The Awbridge Pop-Up Pub is back by popular demand. Doors open at 7pm till late.

The Happy Fryer chip van is coming along too and will be in the car park from 6.30pm.



MOTTISFONT SOCIAL CLUB

Forthcoming events

► 7th December: Children's Christmas Party 2pm to 5pm.

14th December: Christmas Draw and bumper Meat Draw. Tickets on sale at the bar.

New Years Eve: Party to celebrate 100 years of the club.

25th January: Monthly Quiz, 8pm

No Quiz in December.

Christmas opening times

Christmas Day: 12 noon to 2pm

Boxing Day: closed

New Years Day: closed

Regular Activities at Mottisfont Social Club

Mondays:

Ladies' Darts Teams in the Romsey and District Ladies Dart League
Snooker Teams in the Southampton Snooker League

Tuesdays:

Billiards Team in the Test Valley Billiards League

Thursdays:

Bingo - this is very popular with a chance of winning up to £100.
Find the Joker game

Fridays:

Darts Team - Romsey Men's Darts League

Saturdays:

Quiz (last Saturday of the month)

Sundays:

We have our own Skittle League, 8 people in a team. We are always looking for new teams to join us.

Most of these activities take place between September and May apart from Ladies' darts and bingo which take place all year round.

If you are interested in any of these activities please contact the club on 340521 or pop in for a drink.

MOTTISFONT PARISH COUNCIL



Meeting dates for 2020

Wednesday 15th January

Wednesday 18th March

Annual Parish Meeting: Wednesday 22nd April

Annual General Meeting: Wednesday 13th May

BROADBAND IN THE PARISH

The Parish Council has asked BT Openreach for a quotation for providing a fibre broadband connection to those residents who told us that they are interested in better broadband. In return, BT offered a quotation to connect over 30 dwellings on Spearywell Road only, which was £69,000. Assuming that around half those residents take up the offer and use the Government's Rural Gigabit Voucher scheme, then around £40,000 would be available, leaving the remainder to be paid by residents. It would seem that their costs would be at least £1,000 per household, and probably a lot more. We asked BT for a second quotation, and this was no better, so we are assuming for now that the BT option is not viable.

The Parish Council has also met Virgin. They are very keen to extend their 'virtual town network' that has started to serve West Tytherley, Broughton, Kings Somborne and other parishes north of us. Virgin would now like to involve other parishes, and their approach is very different to BT's. They need around 50% of residents to sign up for their service, and they will then design a scheme to provide fibre to the premises to all of those who sign up. The cost to each household is any of the standard tariffs shown on their website, which essentially provides for options of around 50, 100 or 350 megabits/second download speeds, with a standard connection fee plus the usual packages of extras involving TV, etc. The standard tariffs apply irrespective of the cost of connection to each subscribing household.

The question is how many Mottisfont residents might be interested in this approach? Virgin would also like our parish to join up with our neighbours so they can extend their network more widely, and we are more than happy to do this. Can we ask anyone interested to **email**

broadband@mottisfontpc.org.uk - even if you have previously emailed us on this subject. Could you also spread the word to neighbours and others in the parish who might be interested, so that we stand a chance of getting to the 50% level. In West Tytherley 70% of broadband users have signed up and they are now getting the new service.

Jeff Channing and Peter Barnett